

WIENERSTRASSE 9, A-7082 DONNERSKIRCHEN

ÜBERSICHTSPLAN

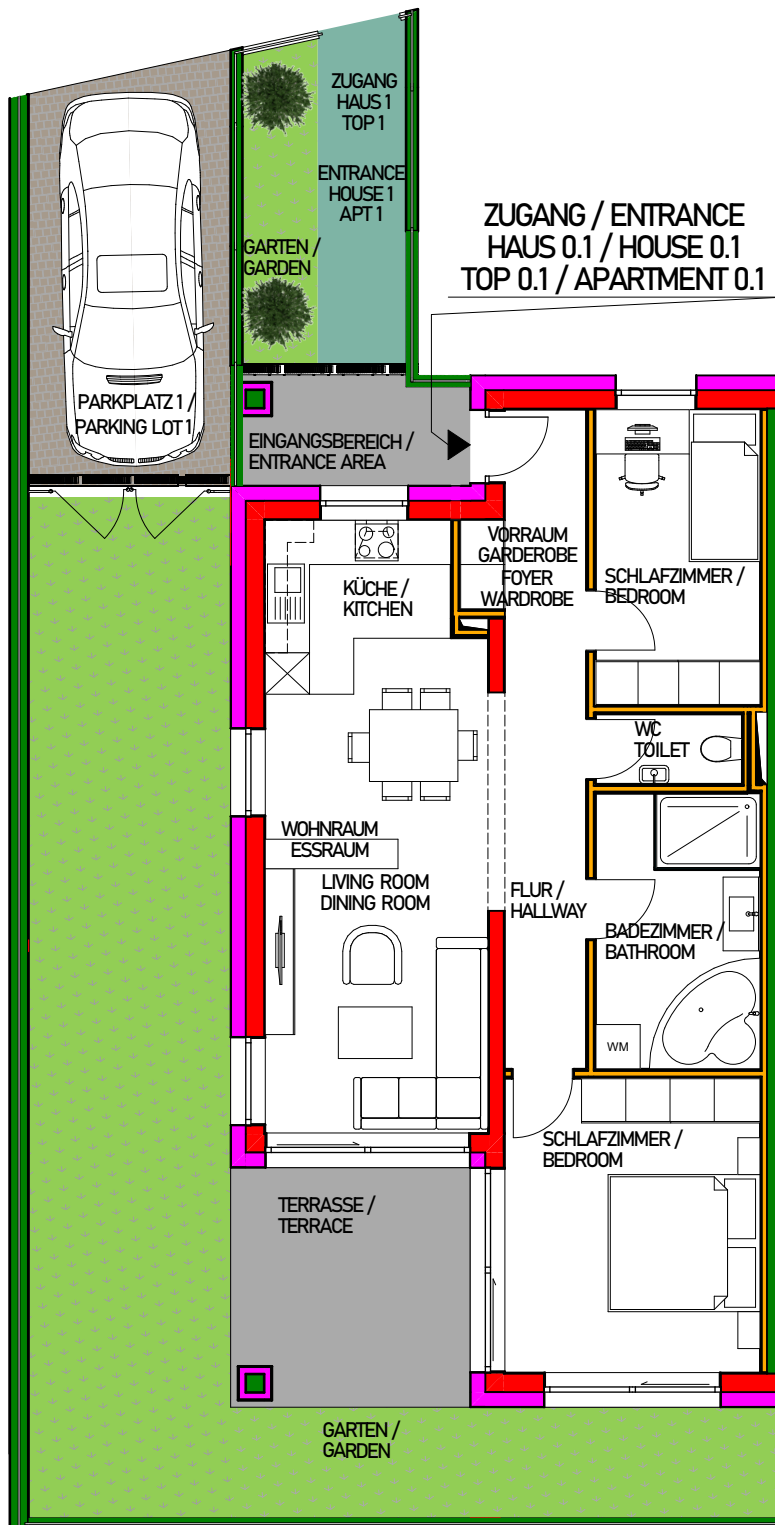
LAYOUT

HAUS 0.1

HOUSE 0.1

TOP 0.1 - ERDGESCHOSS

APARTMENT 0.1 - GROUND FLOOR



HOUSE 0.1 -
APARTMENT 0.1
ca. 68 m²
GARDEN
ca. 53 m²
TERRASSE
ca. 14 m²
ENTRANCE
ca. 6 m²
PARKING LOT 1
ca. 14 m²
PARKING LOT 2
ca. 14 m²

HAUS 0.1 - TOP 0.1
ca. 68 m²
GARTEN
ca. 53 m²
TERRASSE
ca. 14 m²
ZUGANG
ca. 6 m²
PARKPLATZ 1
ca. 14 m²
PARKPLATZ 2
ca. 14 m²



IMMOBILIEN GMBH